

A woman in a white dress with black polka dots and a black belt is riding a dark blue bicycle on a paved path. She is holding a large black umbrella over her head. The background is a grassy field under a dark, stormy sky. The text 'practical solutions' is overlaid on the left side of the image.

practical solutions

.....
annual report & prospectus 2009



adapting to change

failing to manage risk will cost you time and money
our specialist services will [save](#) you



executive report

It has been a year of achievement for the Brain Injury Association of Queensland Inc (BIAQ). We have increased the scope of our services while solidifying our model of practice through solid strategic direction and a culture of continuous improvement.

We believe that the Association is on the verge of something great. We continue to satisfy our clients. The communities in which we operate hold us in high regard. Innovation is a vital ingredient as we reinvent the culture of disability services in Australia.

Refusing to let inertia dictate our service delivery, comprehensive strategic planning and investment in our staff have allowed us success, regardless of the challenges we face on a daily basis.

But we want more . . .

Our objective now is to build on the strong foundations we have created. The Association that truly differentiates itself from the rest of the pack. Ensuring that each of our services can answer the question "Why should someone work with us?" This is one of the most important questions we face, and we can guarantee that the Brain Injury Association of Queensland is up to the challenge.

Through collaboration, determination, and perseverance, we will expand our branding

and service delivery throughout the Australian and International markets.

We will provide accommodation for those living inappropriately.

We will increase the capacity of our staff, our colleagues, our clients, and the other services we work alongside.

We will not accept inadequate support or treatment of people with a disability.

We are prepared; confident that the Brain Injury Association of Queensland is poised as an Australian leader in innovation and quality service delivery.

Neil Federer
President



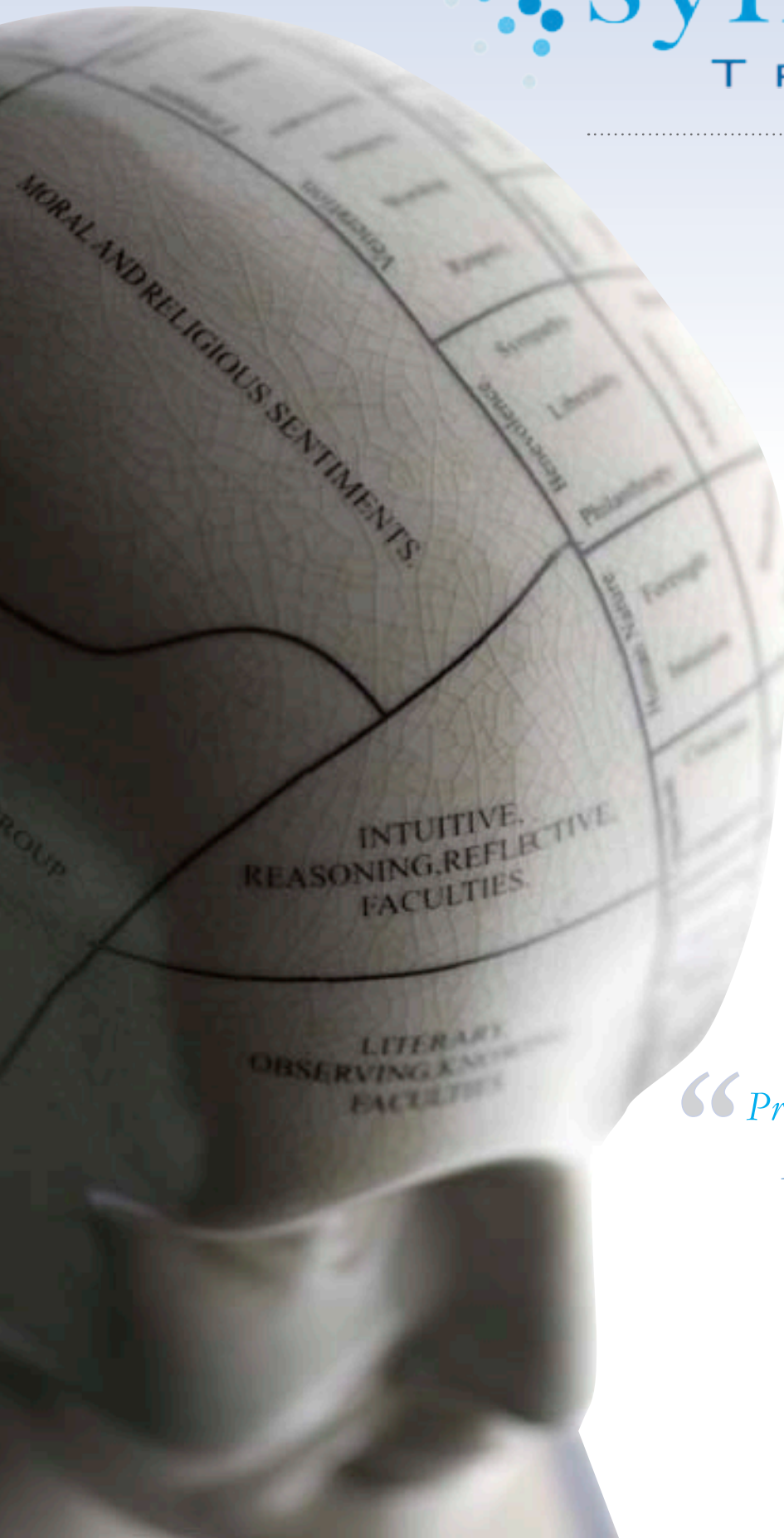
Jennifer Cullen
CEO



www.braininjury.org.au



synapse
TRAINING



“*Practical Solutions
Effective Strategies
Virtually Anywhere*”

synapse training e-learning centre

ONLINE TRAINING SOLUTIONS

Save time and money by training online. Synapse Training e-Learning Centre provides innovative solutions to assist organisations and individuals with a wide range of training needs.

This includes, but is not limited to, training seminars or workshops in:

- Understanding and Managing Complex and Challenging Behaviour
- Positive Behaviour Support
- The Effective Support Person
- Introduction to Acquired Brain Injury.

Expose your branding to new clients and give your business the power to grow to its full potential.

Sell your training online and earn ongoing and sustainable income with no ongoing labour costs.

- Publish your training presentations or workshops online with our established e-Learning software
- Make an impression on your clients with high level functionality and corporate design
- Use our integrated payment system to sell your products with full control over pricing options
- No setup or web site hosting costs.

FACE-TO-FACE TRAINING SEMINARS

Looking for practical strategies to manage behaviour?

Synapse Training workshops are conducted by our specialist Behaviour Consultancy Service.

With a large range of training options available, we can customise content to meet your organisation's needs.

For further information or booking details contact:

ph: +61 7 3367 1049 or
training@synapse.org.au



www.synapse.org.au



Over 250 online courses ranging from short workshops to fully accredited Certificate IV.



Train virtually anywhere . . . online courses provide more flexible and time-efficient options for staff.



Courses include "Managing Complex and Challenging Behaviour" — train staff to minimise workplace risk.

corporate services



reach new heights

CONSULTANCY SERVICES

High quality branding, innovative resources, sustainable and profitable business relationships.

The Brain Injury Association of Queensland Inc. and Synapse Training have a range of collaborative service options available for both high level corporate and community sector organisations. These include, but are not limited to:

- Executive presentations
- Strategic project collaboration
- Sponsorship and advertising through our extensive electronic infrastructure, online publications or hard copy magazines and other resources
- Awareness / fund-raising / youth events
- Professional consultancy including, but not limited to: training, behaviour, assessments, transition planning, web design, submission writing, organisational capacity, model of practice etc.

For more information with regards to anything above, please contact:

projects@braininjury.org.au

www.braininjury.org.au

STRATEGIC PROJECTS

The Association has a range of collaborative, long-term strategic projects.

We are committed to providing sustainable, individualised solutions addressing unmet need within the community, including, but not limited to:

- Post-acute centre
- Long-term accommodation facility
- Urban accommodation for rural and remote families
- Unit / villa complex
- Innovative publication development
- Satellite offices - priority is Far North Queensland.

Business plans, budgets, and marketing materials are available on request.





accommodation project



INTERFACE – COLLABORATIVE / LONG-TERM STRATEGIC PROJECTS

We are looking for partners to assist with the following projects:

- Post-acute centre
- Long-term accommodation facility
- Urban accommodation for rural and remote families
- Unit / villa complex.



Donate now and assist us to provide suitable accommodation options to young people.



Person-centred models of support allow us to provide homes – not institutions.



Client transitions are made easier through positive behaviour support and years of experience in providing accommodation services.

SOLUTIONS FOR YOUNG PEOPLE BASED ON THEIR NEEDS.

Interface is an integrated continuum of supported accommodation models. This operates under principles of development, maximising dignity, choice and personal independence using non-restrictive support techniques grounded in the principles and practices of Positive Behavior Support.

The project incorporates a series of programs and/or models of support that assist individuals to attain an improved quality of life. By using a broad range of accommodation and support options, individuals are able to identify which facilities and programs are best suited to respond to their current and future needs, and are able to move to other programs on the continuum as their needs change.

Individually, each program is self-contained. Collectively, the programs combine to form a continuum which allows and encourages individuals to progress to higher levels of independence compatible with their needs.

TARGET GROUP

- People aged between 18 and 65 who have an Acquired Brain Injury.
- People with a disability who have complex support needs, and who would benefit from services provided by the Brain Injury Association of Queensland.
- Priority is given to people with an acquired brain injury whose complex needs make it difficult or inappropriate for them to access other disability community services.

For further information or for a referral form, please visit the Interface web site, or contact:

ph: +61 7 3367 1049

info@braininjury.org.au

www.interface.org.au

AN INTEGRATED CONTINUUM OF SUPPORT

Most of us aim for a fulfilling life where we are treated with dignity and respect. To live in a place we call home. A place where we belong and live with people we enjoy being with. People with a disability are no different in this need. The only difference for some is they need personal support to do everyday tasks. The Interface Accommodation Project responds to those needs in a supportive, personal and flexible way that encourages personal development and increased community integration and independence.

Traditional Supported Accommodation Responses

Most traditional responses to the accommodation and support needs of people who have a disability have been fragmented and limited in their success.

Consequently, supported accommodation services rarely provide a continuum through which an individual can progress to higher levels of success and dignity, leading to services becoming institutions of final destination rather than a step in the pathway to a life of choice.

OTHER INTERFACE PROJECTS

- The Hub
- The Units
- Supported Accommodation
- Co-Tenant Housing.

challenging behaviour is not always negative

behaviour normally results from an unmet need

train your staff to identify and **manage** clients' needs





behaviour consultancy service



BEHAVIOURAL ASSESSMENTS

The main outcome of The Behavioural Consultancy Service (BCS) is to provide practical strategies to manage behaviour and improve the quality of life of those persons with complex and challenging behaviour or behaviour that challenges our understanding.

Guided by the Positive Behaviour Support principals, these assessments determine behavioural support needs for persons living with complex needs and behaviours that challenge our understanding.

BCS provides services to individuals or stakeholders if one or more of the following conditions exist:

- The person exhibiting the challenging behaviour is at risk of self-harm or is in danger of harm from the community or environment
- An employee, carer or family member is at risk of harm
- Other clients of the service provider are at risk of harm
- The person who exhibits the challenging behaviour is at risk of being denied access to support
- The person who exhibits the challenging behaviour is at risk of unnecessary exposure to the criminal justice system
- The person who exhibits the challenging behaviour is at risk of becoming socially isolated

HOW DO YOU APPLY FOR THIS SERVICE?

Referrals are accepted via the Behaviour Consultancy Service - Referral Form, available from our web site. One of these forms will need to be completed to receive Behavioural Consultancy Services from the Brain Injury Association of Queensland.

If you are interested in using our service please contact:

ph: +61 7 3367 1049

bcs@braininjury.org.au or

www.braininjury.org.au



Minimise workplace risk through the effective management of complex and challenging behaviour.



Our specialist consultants are fully trained in current Least Restrictive Practices.





assessment & planning service



The Assessment and Planning Service will comprehensively report on a client's functioning - assisting individualised support.



Using a model of practice based on Person-Centred Planning and Positive Behaviour Support, we will assess much more than a client's medical needs.

PRELIMINARY ASSESSMENT OF SKILLS AND FUNCTIONING REPORT

- This is a comprehensive and holistic assessment of a client's skills and functional ability, forming an essential component to determining the appropriate levels of support, staff skills and knowledge requirements, clinical needs and Allied Health needs
- This report has been used to successfully transition individuals between services, out of hospitals and residential aged care, or within home-based or community support models.

OPTIONS PLANNING REPORT

- The Options Planning Report identifies various options, inclusive of geographical location and model of support, for example independent living, supported accommodation, residential aged care or in-home support
- The Options Planning Report presents an overview of support needs/budget requirements with regard to family, service provision, Allied Health and respite services.

RISK ASSESSMENT

- A Risk Assessment provides the level of risks and hazards that are associated with the provision of care and support for a specific client in a specific environment.

DAILY CARE PLANNING

- Care planning involves a comprehensive daily care regime with preferred time frames surrounding the delivery of services to the client.

CLIENT MAPPING REPORT

- Client Mapping is a person-centered focussed tool that the client is able to use in the communication of their hopes, wishes and desires without prejudice
- The client is able to look at the process of empowerment, independence, resources and support.

ACTIVITIES OF DAILY LIVING ASSESSMENT

- This report is a full comprehensive report which can be used in conjunction with Workcover, insurance claims and projections of funding with longevity costs associated with the support of the client
- It is a functional assessment conducted along with interviews with the client and family members detailing history of symptoms, functional limitations, current and past gratuitous requirements compared with clinical assessment of the client's observed performance and with the assumptions previously obtained
- This assessment is a valuable report for solicitors, service providers, Adult Guardianship Tribunal, Public Trustees, and provides expert evidence.

WORKPLACE HEALTH AND SAFETY ASSESSMENT

- This assessment is specific to the needs of disability service providers and community health organisations
- The assessment is able to identify work practices that are risking the health of the client/employees, and offers recommendations for maintaining the health of those who work or come to the workplace.

OCCUPATIONAL HEALTH AND SAFETY ASSESSMENT

- The Occupational Health and Safety Assessment is able to provide recommendations for the management of general health and safety for the clients and staff
- Competent staff and a reasonably safe working environment with appropriate functional equipment are reviewed to establish a safe system of work with recommendations/training provided to assist in service delivery.

For referrals, or for more information, contact:

ph: +61 7 3367 1049

ypirac@braininjury.org.au or

www.braininjury.org.au

WEBSAUCE

flavour your site

innovative and **cost-effective**
web design solutions





THE SOLUTION

WebSauce is a unique model of information technology service delivery for the non-government, not-for-profit and corporate sectors. This web consultancy service has three main elements:

- Delivery of internet-based services specifically around web site development and support
- Increased capacity (and confidence) of the community sector for web-based resources and information technology
- Education, information and training provision around information technology and the Internet.

DEVELOPMENT COST

Visit the web site for our pricing structure, online demonstrations, and additional features, or contact us for a quote / proposal via webmaster@websauce.org.au

DESIGN FEATURES

WebSauce has a large library of extensions (and documentation) downloaded and ready to use. These extensions have been identified as valuable resources for the aforementioned sectors, and include, but are not limited to:

- Electronic newsletters
- Document manager
- Flash-animated photo and movie gallery
- Google analytics (providing comprehensive web statistics for your site)
- Events registration and events calendar
- Search Engine Optimisation tools (SEO)
- Text reader support (facilitating access for people with a disability)
- Web store and shopping cart
- And many more . . . all for free.

www.websauce.org.au

publications



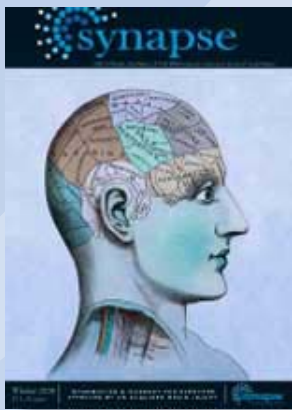
PUBLICATIONS – COLLABORATIVE STRATEGIC PROJECTS

We are looking for partners to assist in the development / redevelopment of the following resources.

- Acquired Brain Injury – The Facts
- Awareness posters
- Parents Guide – Growing Up With Acquired Brain Injury
- Understanding and responding to challenging behaviours
- Any other projects as specified by your organisational needs.

For more information on how to get involved, or to order any of these publications, contact:

info@braininjury.org.au or
www.braininjury.org.au



SYNAPSE MAGAZINE

Synapse is a 32-page full colour glossy magazine (published quarterly since 2000) with practical information and strategies for people affected by acquired brain injury, their family, friends, and associated professionals.

Synapse is a collaborative publication, and we encourage submissions, stories, and/or practical articles from other stakeholders.

Corporate sponsorship is also available on request.

All current / back issues are available in hard copy or for download online from www.braininjury.org.au



WWW.BRAININJURY.ORG.AU

With almost 1,000,000 hits per year, www.braininjury.org.au is a leading electronic resource both in nationally and internationally.

The web site features a comprehensive range of free Acquired Brain Injury fact sheets and online publications (over 130 online resources). They provide information and practical strategies for clients, family members, friends and associated professionals.

Additional features include information on all our service, referral forms, enquiry forms, online job applications, publication downloads . . . and much more.



ACQUIRED BRAIN INJURY - THE FACTS

ABI - The Facts is a collection of our most comprehensive fact sheets, taking the reader from the hospital stage, right through to long-term rehabilitation and employment options.

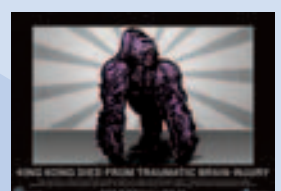
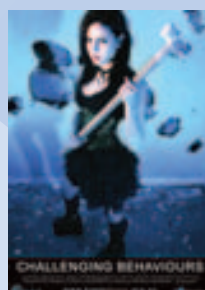
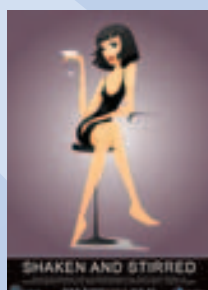
This publication has been one of our most popular resources, with copies sent to individuals and organisations around the world.



AWARENESS POSTERS

These free posters are available as hard copies or for free download (as desktop wallpapers) via the web site. Each poster has been customised to appeal to youth and alternative cultures, focussing on raising awareness about Acquired Brain Injury, disability issues, and harm-minimisation / prevention in the wider community.

The posters have been one of our most popular resources, with copies sent to individuals and organisations around the world.



community response service



INFORMATION, EDUCATION AND TRAINING (STATEWIDE)

The Community Response Service responds to a wide range of unmet needs within the community including, but not limited to:

- Information and referral service
- Information / education presentations (introductory level)
- Publication development, including Synapse Magazine, online fact sheets and Acquired Brain Injury - The Facts
- Event management
- Marketing and advertising material
- Facilitations of several network meetings, including the Brain Injury Network (BIN) and ABI Learning Network - Far North Queensland
- e-Newsletter development and distribution
- Needs-analysis, statistics collation and reporting,

If you are interested in using our service please contact:

ph: +61 7 3367 1049

info@braininjury.org.au or

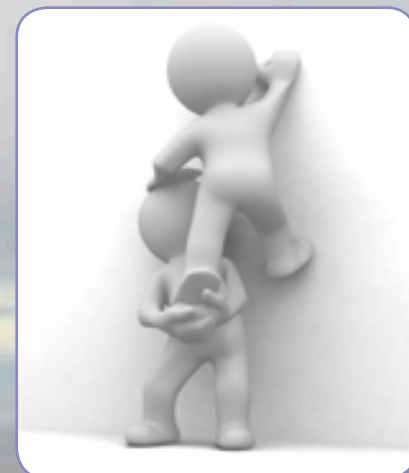
www.braininjury.org.au

AUSTRALIAN STATISTICS ON ACQUIRED BRAIN INJURY (ABI)

- Over 1 in 50 people have an ABI (higher than intellectual disability)
- ABI disproportionately affects males
- Young men have the highest risk of sustaining a traumatic brain injury
- Two-thirds of people with ABI are aged 45 or over
- Multiple disabilities are characteristic of the population with ABI
- Survey data indicate substantial levels of unmet need for assistance
- There is a heavy reliance on informal assistance
- Complex support needs are characteristic of service users with ABI
- There is a high rate of multiple service use among disability service users with ABI
- Complex needs are unlikely to be entirely met by only one service.



We can assist with any enquiries around Acquired Brain Injury, or disability services in general.



Working with the community and corporate sectors to address the high level of unmet need around disability services.

human resources & operations



EMPLOYER OF CHOICE

The Association prides itself on being an employer of choice.

With high work standards and through a process of continuous improvement, all employees receive the following training before they undertake any formal work:

- Managing Complex and Challenging Behaviour
- Model of Practice
- Introduction to Acquired Brain Injury
- Positive Behaviour Support
- Mandatory training (including: manual handling, personal protective equipment, documentation, medication management, workplace health and safety)
- Preventing and responding to abuse, assault and neglect.

EMPLOYEE STATISTICS

- Average of 107 employees for the financial year 2008-2009
- FTE employees as at June 2009: 69.1.

EMPLOYEE INCENTIVES

- Generous allowance paid for completion of AFA/CPR refreshers
- Short shift allowance
- Flexible working hours incl TOIL and nine day fortnight
- Employee Assistance Program
- Professional development budget
- Salary packaging
- Support to achieve Cert IV in Disability Support Work
- Comprehensive five day induction / orientation program,
- Ongoing service specific training
- Inclusive and supportive culture.

EMPLOYEE FEEDBACK

"BIAQ is a great place to work in that it encourages people to develop their strengths. It also gives employees the space to do so. It accepts all people without discriminations, and rewards people appropriately on quality of work produced"

"I think BIAQ is all round, a wonderful organisation to work for. It has been my most pleasant job to date!"

"BIAQ is a fantastic place to work and the future looks bright"



Accountants | Business and Financial Advisers

Brain Injury Association of Queensland Inc.

ABN 75 631 135 125

Independent Audit Report to the members of Brain Injury Association of Queensland Inc.

We have audited the accompanying financial report of the Brain Injury Association of Queensland Inc. ("the association"), which comprises the balance sheet as at 30 June 2009, and the income statement, statement of changes in equity and cash flow statement for the year ended on that date, a summary of significant accounting policies and other explanatory notes and the statement by members of the committee for the association as set out on pages 3 to 17.

Committee's responsibility for the financial report

The members of the committee of the association are responsible for the preparation and fair presentation of the financial report and have determined that the accounting policies described in Note 1 to the financial statements, which form part of the financial report, are consistent with the financial reporting requirements of the *Associations Incorporation Act 1981 (QLD)* and are appropriate to meet the needs of the members. This responsibility includes establishing and maintaining internal controls relevant to the preparation and fair presentation of a financial report that is free from material misstatement, whether due to fraud or error; selecting and applying appropriate accounting policies; and making accounting estimates that are reasonable in the circumstances.

Auditor's responsibility

Our responsibility is to express an opinion on the financial report based on our audit. No opinion is expressed as to whether the accounting policies used, as described in Note 1, are appropriate to meet the needs of the members. We conducted our audit in accordance with Australian Auditing Standards. These Auditing Standards require that we comply with relevant ethical requirements relating to audit engagements and plan and perform the audit to obtain reasonable assurance that the financial report is free from material misstatement.

An audit involves performing procedures to obtain audit evidence about the amounts and disclosures in the financial report. The procedures selected depend on the auditor's judgement, including the assessment of the risks of material misstatement of the financial report, whether due to fraud or error. In making those risk assessments, the auditor considers internal control relevant to the entity's preparation and fair presentation of the financial report in order to design audit procedures that are appropriate in the circumstances, but not for the purpose of expressing an opinion on the effectiveness of the entity's internal control. An audit also includes evaluating the appropriateness of accounting policies used and the reasonableness of accounting estimates made by the members of the committee, as well as evaluating the overall presentation of the financial report.

The financial report has been prepared for distribution to members for the purpose of fulfilling the committee's financial reporting under the *Associations Incorporation Act 1981 (QLD)*. We disclaim any assumption of responsibility for any reliance on this report or on the financial report to which it relates to any person other than the members, or for any purpose other than that for which it was prepared.

Our audit did not involve an analysis of the prudence of business decisions made by the members of the committee or management.

We believe that the audit evidence we have obtained is sufficient and appropriate to provide a basis for our audit opinion.

HLB Mann Judd (SE Qld Partnership) ABN 68 920 406 716

Level 15, 66 Eagle Street, Brisbane QLD 4000 | GPO Box 5225 Brisbane QLD 4001

Telephone +61 (0)7 3001 8800 | Facsimile +61 (0)7 3221 0812 | Email: info@hlbqld.com.au | Website: www.hlbqld.com.au

Level 3 Corporate Centre One, 2 Corporate Court, Bundall QLD 4217 PO Box 5714 Gold Coast Mail Centre QLD 9726

Telephone +61 (0)7 5574 0922 | Facsimile +61 (0)7 5574 0632 | Email: info@hlbgld.com.au

Liability limited by a scheme approved under Professional Standards legislation.

HLB Mann Judd (SE Qld Partnership) Pty Ltd is a member of International. A world-wide organisation of accounting firms and business advisers.

Brain Injury Association of Queensland Inc.

ABN 75 631 135 125

**Independent Audit Report (continued) to the members of
Brain Injury Association of Queensland Inc.****Independence**

In conducting our audit, we followed applicable independence requirements of Australian professional ethical pronouncements.

Bases of Qualification*Opening Balances*

The financial report for Brain Injury Association of Queensland Inc. for the year ended 30 June 2008 was not audited by HLB Mann Judd. We were unable to perform alternative audit procedures to enable us to form an opinion on the comparative balances as at 30 June 2009. The results of the association for the year ended 30 June 2009 would be affected to the extent of any misstatements of the 30 June 2008 financial report. Accordingly, we are not in a position and do not express an opinion on the financial report for the year ended 30 June 2008 which is included for comparative purposes.

Qualified Auditor's Opinion

In our opinion, except for the effects of such adjustments, if any, that might have been determined to be necessary had the limitations referred to in the qualification paragraphs not existed, the financial report presents fairly, in all material respects, the financial position of Brain Injury Association of Queensland Inc. as at 30 June 2009 in accordance with the accounting policies described in Note 1 to the financial statements.



HLB MANN JUDD (SE QLD PARTNERSHIP)

**CS STURGES**
PartnerDate: 26th October 2009

Brisbane, Queensland

Brain Injury Association of Queensland Inc

ABN 75 631 135 125

Income Statement

For the year ended 30 June 2009

	2009 \$	2008 \$
Revenue	5,040,381	4,613,993
Accountancy and auditor's remuneration	(8,851)	(11,335)
Advertising and promotions	(26,578)	(24,552)
Client support services	(343,965)	(380,711)
Computer expenses	(50,783)	(44,950)
Consultancy fees	(56,149)	(2,620)
Depreciation and amortisation expense	(146,287)	(132,030)
Employee benefits expense	(3,969,239)	(3,303,602)
Finance costs	(52,056)	(52,264)
Insurance	(31,257)	(23,620)
Meeting expenses	(9,075)	(10,223)
Motor vehicle expenses	(54,429)	(52,846)
Other expenses	(135,769)	(208,244)
Printing and office supplies	(42,702)	(66,008)
Repairs and maintenance	(21,735)	(30,308)
Telephone	(40,232)	(33,524)
Utilities	(30,436)	(22,974)
Surplus	20,838	214,182

Brain Injury Association of Queensland Inc

ABN 75 631 135 125

Balance Sheet

As at 30 June 2009

	2009 \$	2008 \$
Current assets		
Cash and cash equivalents	756,964	610,857
Trade and other receivables	171,963	53,318
Other current assets	21,386	2,125
Total current assets	950,313	666,300
Non-current assets		
Property, plant and equipment	3,682,003	3,758,087
Total non-current assets	3,682,003	3,758,087
Total assets	4,632,316	4,424,387
Current liabilities		
Trade and other payables	686,616	508,234
Short-term provisions	148,134	168,112
Total current liabilities	834,750	676,346
Non-current liabilities		
Long-term borrowings	720,000	720,000
Long-term provisions	28,687	-
Total non-current liabilities	748,687	720,000
Total liabilities	1,583,437	1,396,346
Net liabilities	3,048,879	3,028,041
Equity		
Accumulated surplus	3,048,879	3,028,041
Total equity	3,048,879	3,028,041

Brain Injury Association of Queensland Inc

ABN 75 631 135 125

Statement of Changes in Equity

For the year ended 30 June 2009

	Accumulated surplus \$	Total \$
Balance at 1 July 2007	1,040,818	1,040,818
Surplus for the year	214,182	214,182
Balance at 30 June 2008 (As previously stated)	1,255,000	1,255,000
Error	1,773,041	1,773,041
Restated Balance 30 June 2008	3,028,041	3,028,041
Surplus for the year	20,838	20,838
Balance at 30 June 2009	3,048,879	3,048,879

Brain Injury Association of Queensland Inc

ABN 75 631 135 125

Statement of Cash Flows**For the year ended 30 June 2009**

	2009	2008
	\$	\$
Cash flows from operating activities		
Receipts from customers	4,896,356	4,655,694
Payments to suppliers and employees	(4,634,109)	(3,999,310)
Interest received	6,119	1,282
Finance costs	(52,056)	(52,264)
Net cash provided by operating activities	216,310	605,402
Cash flows from investing activities		
Proceeds from sale of property, plant and equipment	-	33,044
Payment for property, plant and equipment	(70,203)	(135,648)
Net cash provided by investing activities	(70,203)	(102,604)
Cash flows from financing activities		
Proceeds from borrowings	-	-
Net cash used in financing activities	-	-
Net increase in cash held	146,107	502,798
Cash at beginning of year	610,857	108,059
Cash at end of year	756,964	610,857

Brain Injury Association of Queensland Inc
Statement by the members of the committee
For the year ended 30 June 2009

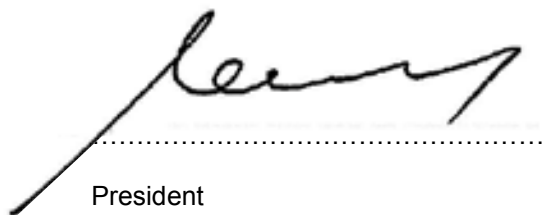
The Committee has determined that the Association is not a reporting entity.

The Committee has determined that this special purpose financial report should be prepared in accordance with the accounting policies outlined in Note 1 to the financial statements.

In the opinion of the committee the financial report as set out on pages 3 to 16:

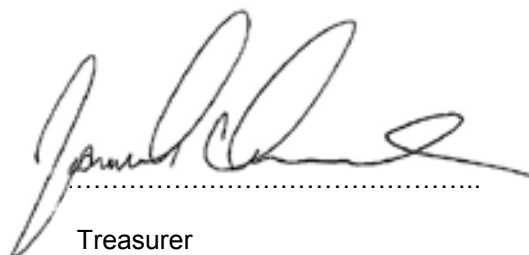
1. Presents fairly the financial position of Brain Injury Association of Queensland Inc. as at 30 June 2009, and its performance for the year ended on that date.
2. At the date of this statement, there are reasonable grounds to believe that the Brain Injury Association of Queensland Inc. will be able to pay its debts as and when they fall due.

This statement is made in accordance with a resolution of the Committee and is signed for and on behalf of the Committee by:



.....

President



.....

Treasurer

Brisbane
Date:

23rd October 2009



www.braininjury.org.au



www.synapse.org.au